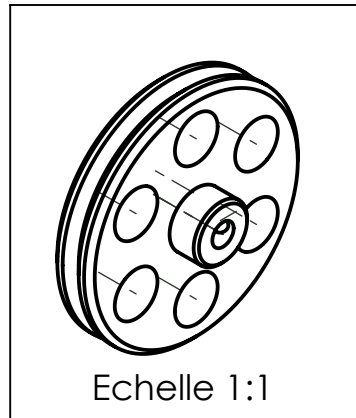
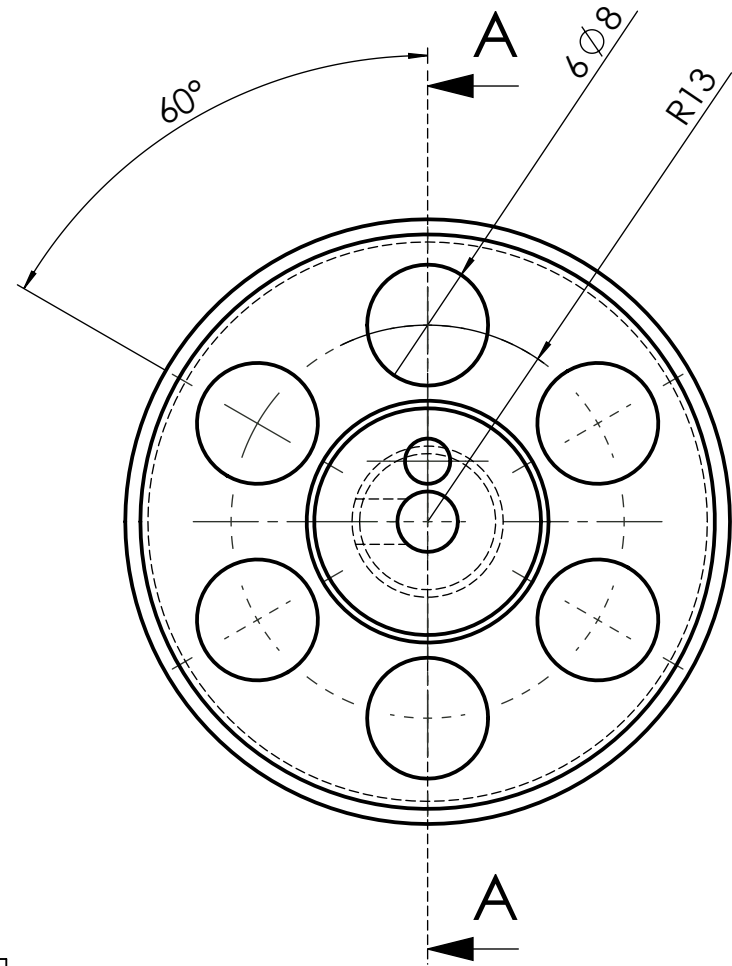


COUPE A-A



Echelle 1:1



TOLERANCES GENERALES : ISO 2768 mK

|                      |    |                   |         |                   |           |
|----------------------|----|-------------------|---------|-------------------|-----------|
| 9                    | 1  | Volant coté chaud | C35     | Acier             | 4109      |
| Rep                  | Nb | Désignation       | Matière | Observation       | Référence |
| Production Mécanique |    |                   |         | LYCEE JEAN MONNET |           |
|                      |    | Année 2008/2009   |         | Moteur STIRLING   |           |
| Format : A4          |    | Modification:     |         |                   |           |
| Ech. 2:1             |    | Modification:     |         |                   |           |
| Dessiné par: MPK     |    |                   |         |                   |           |